

The background of the slide is a close-up, high-resolution photograph of orange chrysanthemum flowers. The petals are numerous, elongated, and radiate from a central point, creating a dense, textured pattern. The color is a vibrant, warm orange. The central text box is a dark blue rectangle with a white border, positioned in the middle of the image.

UF | IFAS Research
UNIVERSITY of FLORIDA

2020
Goals, Activities and
Organizational Structure

MISSION STATEMENT

The research mission of UF/IFAS, conducted under the auspices of the Florida Agricultural Experiment Station (FAES), is to discover new scientific knowledge, encourage innovative study and create applications based on sound science that address challenges facing agriculture, natural resources, and interrelated human systems in Florida, our country, and the world.

UF/IFAS RESEARCH OFFICE GOALS

Research
Culture:

Research
Programs:

Research
People:

Enrich our research culture to strengthen innovation and discovery...



...by encouraging the recruitment and retention of diverse, top-performing faculty and staff, developing and improving student research experiences, and promoting synergies between the land grant missions.

Expand our global leadership in transformational basic and applied research...



...by developing “seed” programs to support strategic research initiatives, increasing awareness of funding opportunities, and funding targeted investments in equipment and infrastructure.

Build satisfaction and quality of life on the job for faculty and staff...

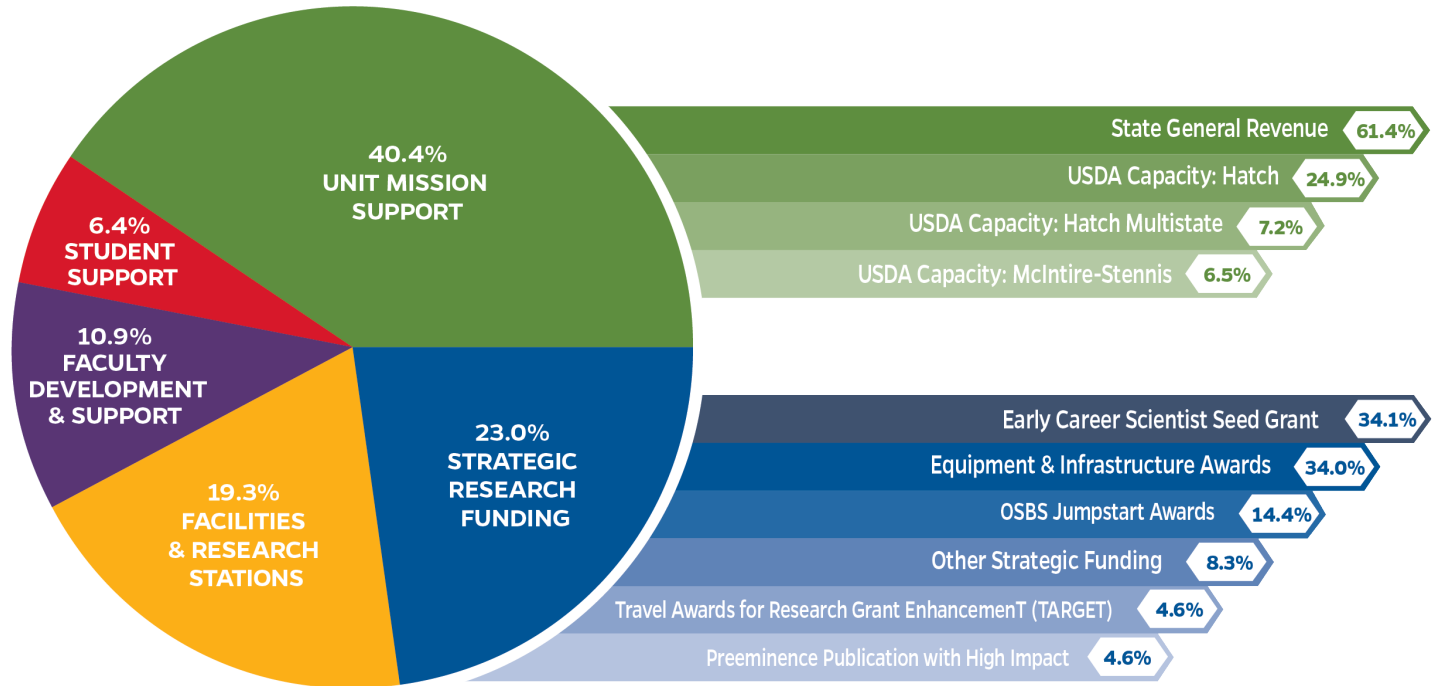


...by facilitating professional development, fostering an inclusive and collegial environment, promoting staff achievements, and recognizing distinction in disciplinary and interdisciplinary research.

FINANCIAL COMMITMENTS BY ACTIVITY (FY 2018-2019)

TOTAL FUNDING PROVIDED BY THE
UF/IFAS RESEARCH DEAN'S OFFICE

\$8.95 MILLION



FUNDING SOURCES

41.1% State

27.0% Federal Capacity

16.7% Royalty Funds

14.2% IDC

1.0% All Others

UF/IFAS Research Administration Organizational Chart



Dean for Research, Director of the Florida Agricultural Experiment Station (FAES)

Robert Gilbert



Senior Associate Dean for Research, Associate Director of FAES

John Davis

ORDWAY-SWISHER
BIOLOGICAL STATION

COMMUNICATIONS

INFORMATION
TECHNOLOGY

PRE-AWARD
GRANTS/CONTRACTS

PLANT SCIENCE
RESEARCH &
EDUCATION UNIT

BUDGET/FINANCE

IFAS INTERNATIONAL
SUPPORT TEAM

CULTIVAR RELEASES

⋮

LICENSING

ADMINISTRATIVE
SUPPORT



Assistant Director of FAES

Jerry Fankhauser

STATEWIDE
RESEARCH
INFRASTRUCTURE



Interim Associate Dean for Research

Damian Adams

INTERNAL
FUNDING
OPPORTUNITIES

EVENTS

SPECIAL PROJECTS