



UF | IFAS Research
UNIVERSITY of FLORIDA

2017

UF/IFAS RESEARCH OVERVIEW

UF/IFAS FLORIDA AGRICULTURAL EXPERIMENT STATION

HUMAN SYSTEMS 

NATURAL RESOURCES 

AGRICULTURE 



Mission

The research mission of UF/IFAS, conducted under the auspices of the Florida Agricultural Experiment Station (FAES), is to discover new scientific knowledge, encourage innovative study, and create applications based on sound science that address challenges facing agriculture, natural resources, and interrelated human systems in Florida, our country, and the world.

History

FAES was founded in 1887 at Florida Agricultural College in Lake City, the state's original land-grant institution. When UF officially began operations in fall 1906, FAES was relocated to Gainesville. For much of the 20th century, FAES was headquartered in Newell Hall on the UF main campus, named for former FAES director Wilmon Newell who served from 1921-1943.

The first off-campus FAES facility was the Citrus Research and Education Center (REC) in Lake Alfred, established a century ago in 1917 to aid the state's citrus growers. It was followed by the Everglades REC in Belle Glade, North Florida REC in Quincy, and the Tropical REC in Homestead, all of which were established in the 1920s. Additional facilities opened in the decades that followed, increasing the statewide presence of FAES.

Funding

According to the most recent National Science Foundation figures, UF has ranked first or second among U.S. universities in total agricultural sciences research expenditures since fiscal year 2001.¹

Financial support for UF/IFAS research activities comes from a variety of sources, including federal contracts and grants; state programs and appropriations; check-off programs sponsored by producers; contracts and grants from non-profit organizations and private companies; donations; and revenues from the licensing of crop cultivars, products, and technologies developed by UF/IFAS personnel.

Faculty

UF/IFAS employs more than 550 faculty members with research appointments. Many UF/IFAS researchers are award-winning, internationally recognized experts who publish papers in leading peer-reviewed journals and are inducted into prestigious organizations such as the National Academy of Sciences and the American Association for the Advancement of Science.

The University of Florida is a land-grant university and an Association of American Universities member.

Our faculty are committed to the UF/IFAS research mission while also assuming Extension and teaching responsibilities, and findings from their research are used as the basis for Extension programs taught statewide via publications, distance education, and field day events, and are the foundation of many of the classes taught by our faculty.

Research

At UF/IFAS, research scientists work diligently to discover solutions to some of the most vexing problems in Florida and the world. Our research spans three comprehensive areas: agriculture, natural resources, and human-systems research.

Our researchers play leading roles in cross-cutting, campus-wide research initiatives such as:

- Biodiversity Institute
- Emerging Pathogens Institute
- Florida Climate Institute
- One Health
- UF Genetics Institute
- UF Informatics Institute
- UF Water Institute

Our researchers are actively involved in UF/IFAS-based centers of excellence such as:

- Center for Aquatic and Invasive Plants
- Center for Landscape Conservation and Ecology
- Center for Nutritional Sciences
- Center for Public Issues Education in Agriculture and Natural Resources
- Center for Remote Sensing
- Institute for Sustainable Food Systems
- Plant Innovation Center

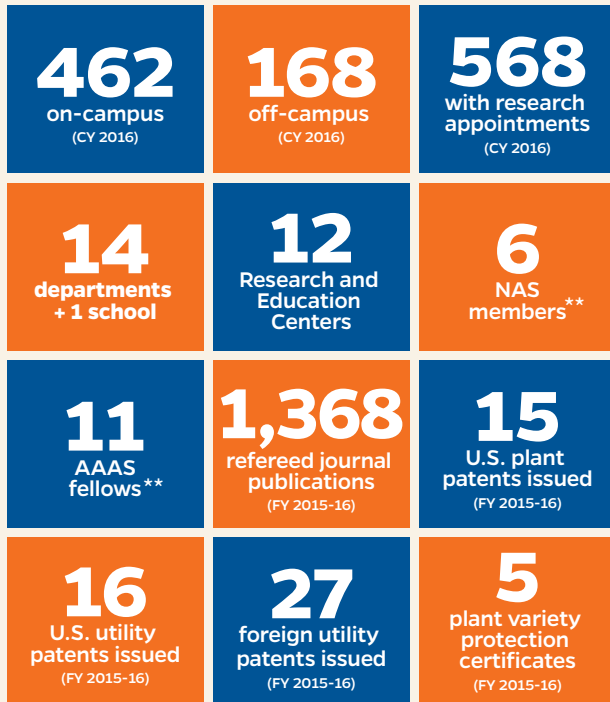
Highlights

FAES is committed to continually improving its research programs to meet stakeholder needs. Enclosed are research highlights that illustrate this commitment, including:

- Developing innovative methods to assess and address challenges faced by coastal communities and natural environments, including coral-reef damage and recovering from natural disasters.
- Responding to newly detected disease threats such as Zika by using the latest technologies to develop effective prediction and mosquito control methods.
- Improving agricultural techniques to sustain a growing world population through the advancement of automated technologies.
- Investing in students who will one day be scientific thought leaders through a competitive, engaging research internship program.



FACULTY*



*Excluding county faculty
**Currently active faculty funded by the state



ADMINISTRATIVE GOALS***

#1 RESEARCH PROGRAMS

Expand our global leadership in transformational basic and applied research by developing "seed" programs to support strategic research initiatives, increasing awareness of funding opportunities, and funding strategic investments in equipment and infrastructure.

#2 RESEARCH CULTURE

Enrich our research culture to strengthen innovation and discovery by encouraging the recruitment and retention of diverse, top-performing faculty and staff, developing and improving research experiences for students, and promoting synergies between the land grant missions.

#3 RESEARCH PEOPLE

Build satisfaction and quality of life on the job by promoting trainings and continuing education, fostering an inclusive and collegial environment, recognizing staff at all career stages in individual and team achievements, and recognizing distinction in disciplinary and interdisciplinary research environments.

***Developed in collaboration with faculty and unit leaders in 2016.

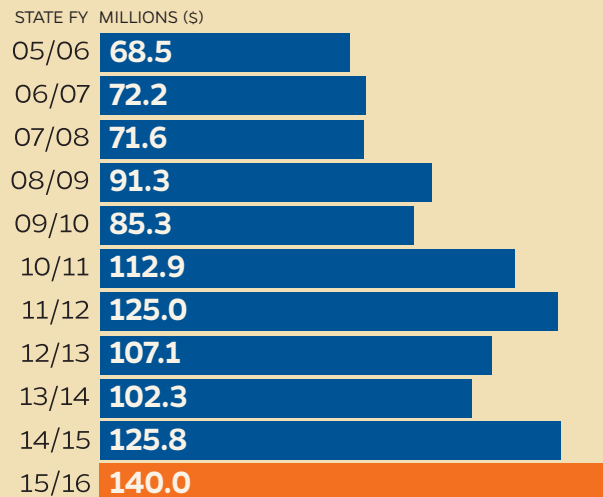


FUNDING

UF/IFAS Agricultural Sciences Research Expenditures

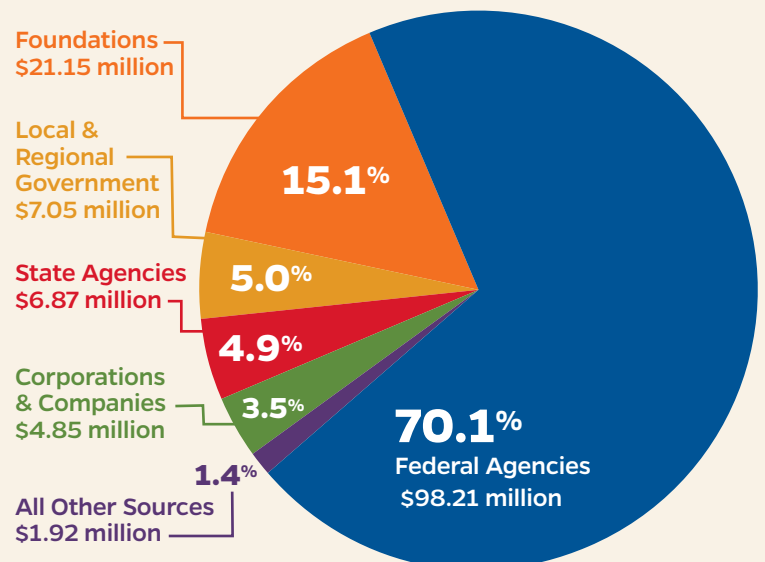
\$167.6 in Federal FY 2015¹
MILLION

Sponsored Research Awards



SPONSORS (FY 2015-16)

1,548 Awards Received, Totaling
\$140 MILLION



UF/IFAS Research Facilities



★ Gainesville Campus

Off-Campus Research and Education Centers (RECs)

- 1 Citrus REC | LAKE ALFRED
- 2 Everglades REC | BELLE GLADE
- 3 Florida Medical Entomology Laboratory | VERO BEACH
- 4 Fort Lauderdale REC | FORT LAUDERDALE
- 5 Gulf Coast REC | BALM, PLANT CITY
- 6 Indian River REC | FORT PIERCE
- 7 Mid-Florida REC | APOPKA
- 8 North Florida REC | MARIANNA, QUINCY
- 9 Range Cattle REC | ONA
- 10 Southwest Florida REC | IMMOKALEE
- 11 Tropical REC | HOMESTEAD
- 12 West Florida REC | JAY, MILTON

Research and Demonstration Sites

- 13 Hastings Agricultural Extension Center | HASTINGS
- 14 Nature Coast Biological Station (NCBS) | CEDAR KEY
- 15 Ordway-Swisher Biological Station (OSBS) | MELROSE
- 16 Plant Science Research and Education Unit (PSREU) | CITRA
- 17 Suwannee Valley Agricultural Extension Center (SVAEC) | LIVE OAK
- 18 Tropical Aquaculture Laboratory (TAL) | RUSKIN, APOLLO BEACH

¹ "Table 39. Total and Federally Financed Higher Education R&D Expenditures in the Agricultural Sciences, Ranked by FY 2015 Total: FYs 2012-15." NCSES Data. National Science Foundation. Web. 1 March 2017. From <http://bit.ly/2lcuFOC>